

**Codima Toolbox**

autoVoIP™	autoVoIP™ Traffic Simulator	autoMonitor™	autoMap™
autoVoIP™ Consultancy Kit	autoAnalyzer™ Consultancy Kit	Call Playback	autoAsset™
Frame Flow Analyzer	RTP Analyzer	Report Browser	Remote Management
		Path Analyzer	

## Map Visualize Monitor And Find Bottlenecks 24/7- A One Click Revolution In Network Monitoring

autoMonitor™ is part of Codima Toolbox, the fully automated and fully integrated solution managing IT networks . The unified tool automatically monitors and finds bottlenecks in IT enterprise networks in real time, as well as maps and visualizes IT assets directly in Microsoft® Office Visio®. autoMonitor™ is a first mover in network performance monitoring, giving the network manager a one stop solution that runs from a single point.

The team at Codima created autoMonitor™ to give network managers a true one stop solution that simplifies network performance monitoring and adds intelligent analysis. The fully automated and integrated real time tool revolutionizes network monitoring with its one click method.

Users can easily map the enterprise network in Visio®, find the bottlenecks in the network with a single click and with the second click identify the cause of the bottlenecks, for example establish if they are due to overloaded interfaces, too high CPU utilization or insufficient memory and disk space on a device. The unified tool uses the best strategy to automatically provide an in-depth analysis of the bottlenecks.

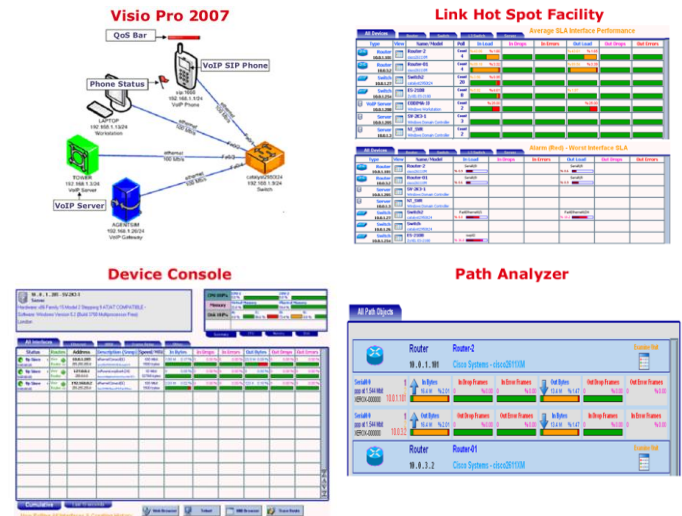
autoMonitor™ scans network devices continuously and collects critical information on performance data that matters. The tool automatically uses SNMP in an expert mode, to look for the most relevant data. autoMonitor™ targets and analyzes critical links like Server Links, WAN Links and major uplinks molding that into useful information. This prevents clogging the network with pointless "what are you doing" traffic.

The Link Hot Spot Facility is a single display highlighting the bottlenecks identified on the network. The name of the worst interface and the associated statistics and SLA (Service Level Agreements) bars are shown. On the display, users can view early warnings on marginal and seriously degraded interfaces and drill down to the Device Console.

The Device Console provides a network manager with real time and cumulative statistics, interface status and performance information for an individual device. For each interface it shows a colored status and SLA display, making it easy to spot problem interfaces. Bottlenecks will have red or amber SLA bars. Users can drill down to History Charts and the create HTML Reports to provide evidence of the problem.

The Device Console also provides a central point to access device specific information on advertised Interface Routes and a range of useful Internet Tools (MIB browser, Web browser, Telnet and Trace Route tools).

autoMonitor™ shows a full range of error levels even very low ones. This is especially important in VoIP environments where a small number of errors can have a significant impact on Quality of Service (QoS). autoMonitor™ shows VoIP critical values, such as dropped percentage of packets as SLA graphs and records them 24/7.



### Network Monitoring

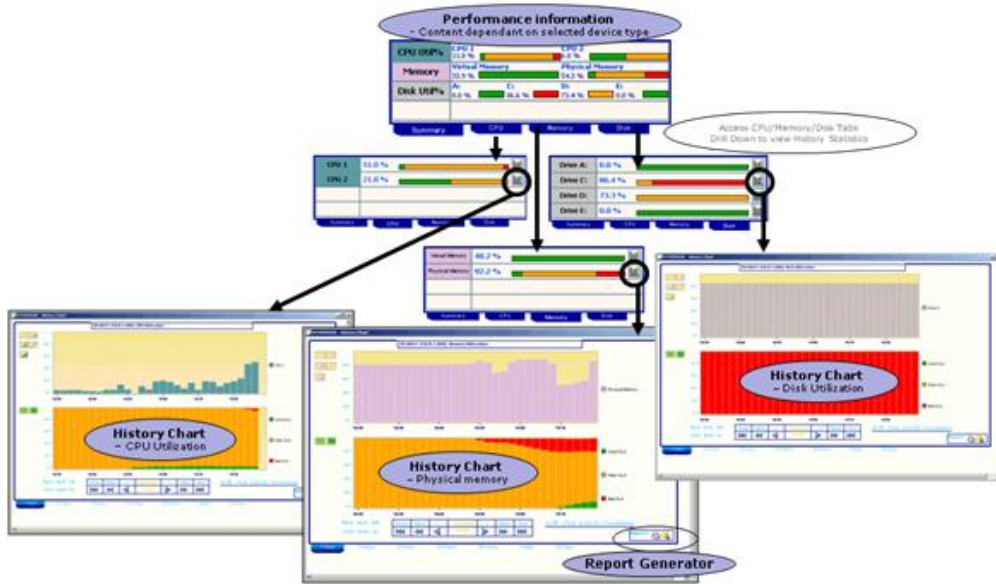
- ▶ Maximum Automation - a true one stop solution
- ▶ Real Time Enterprise Level Network Monitoring - designed to run 24/7
- ▶ Device Console - central point for running tools -MIB browser, Web browser, Trace Route and Telnet
- ▶ Visualization directly in Microsoft® Office Visio®
- ▶ Long term trend analysis
- ▶ Automatically isolating bottlenecks
- ▶ Undertaking Path Analysis to identify bottlenecks/ weakest links

### What Your Business Stands To Gain

- ▶ Efficient real time Network Performance Monitoring 24/7
- ▶ Faster fault isolation leading to less expensive down time
- ▶ Automated process to produce Network Topology Drawings saving time and increasing accuracy by taking information direct from the devices on the network
- ▶ Increased cost efficiency

### Expand Functionality

- ▶ autoMonitor™ can be deployed as standalone or integrated with other tools from Codima Toolbox
- ▶ Add VoIP Monitoring And Troubleshooting
- ▶ Add An Engineer's Portable VoIP Toolkit
- ▶ Add An IT Professional's Network Toolkit



## Key Features

- Full Integration - maps, monitors and troubleshoots networks with visualization directly in Visio™
- Automatic identification of bottlenecks - highlights the worst performing interfaces graphically displaying Warn and Alarm condition
- Designed to run 24/7
- SNMP Poll Manager - automatically identifies and focuses the polling on the key paths in the network providing the user with a simple method of establishing the quality and quantity of the SNMP information being delivered to autoMonitor™ for its analysis of the enterprise networks performance
- Device Console - provides key performance information for selected device and statistics and status information for each Interface
- Path Analyzer - finds and shows in graphical detail bottlenecks in the network path that might be causing bottlenecks in data and VoIP traffic flow

## Key Benefits

- Reduces expensive downtime and improves network performance with fully integrated automated processes
- Allows network managers to automatically monitor, map, visualize and find bottlenecks in any network 24/7
- Delivers easy to use network monitoring - autoMonitor™ becomes a centralized point to monitor and troubleshoot the network, access Route information and Internet Tools
- Uses a well known and often installed application, Microsoft® Office Visio®

## Key Functions

- Link Hot Spot Facility - overview display, uses SLA bars to highlight bottlenecks and provides early warnings on marginal interfaces, enables user to drill down to the Device Console
- Device Console - provides information covering Device performance statistics, and Interface status and statistics. Provides an access point to run Internet Tools and view long term history statistics and Interface Routes
- History Chart - provides SLA graphs over time for selected interface or device performance statistics
- Report Generator - converts History charts to HTML Reports
- Path Analyzer - finds the “weakest link”, i.e., bottlenecks in the network path that might be causing bottlenecks, can be applied for example to the path used by VoIP traffic

## Codima Discovery Engine™

- Codima Discovery Engine™ uses several protocols in the discovery process including:
  - SNMP, SIP, NetBIOS, ICMP and rDNS, as well as proprietary vendor protocols such as WMI, CDP or EDP. Use of common and universal protocols makes the discovery agent-less.
- Supports multiple SNMP read communities across the network
- Provides user control of discovery parameters:
  - Allowed and Prohibited IP Address range can be configured
  - Bandwidth limits can be set from 64Kbs to 640Kbs
  - Discovery can be limited to a range of IP addresses or set to discover as many IP addresses as possible
- Provides for discovery across firewalls

## Requirements

- Microsoft® Office Visio® 2003 or 2007
- Windows Vista, XP or Server 2003 with 2GHz CPU (minimum)
- 2 Gb RAM (minimum)
- Monitor resolution of 1024 x 768 (minimum)

## About Codima Toolbox

Codima Toolbox is a versatile, scalable and integrated solution that helps system integrators, service providers and large organizations as well as small and medium sized companies to manage their networks successful. Built from the ground up the easy-to-use, cost efficient, and highly visual tools deliver a unique beginning-to-end solution for VoIP pre-assessment through post-deployment in addition to automated network monitoring and network discovery with visualization directly in Visio®.

### Key Features include:

- Traffic Simulation and Stress Testing
- Real Time Monitoring
- Automatic Correlation Engine
- Troubleshooting Grid Overview
- In-depth Reports
- Network Monitoring - One Stop Solution
- Automatic Network Inventory and Mapping directly in Visio®

## About Codima

Codima's team has a long track record of bringing highly advanced network technology to the market. Today we are recognized for tools that help organizations to reduce costs, save time and successfully manage their infrastructure networks from beginning to end. Codima is a Microsoft® Certified Partner. autoMonitor™ and autoMap™ are key solution providers to Microsoft® Visio® Toolbox. Codima is an Avaya DevConnect Gold Partner and autoVoIP™, autoMap™ and autoAsset™ are tested and accepted as Avaya Compliant. Codima Toolbox resells through our partners globally.



Microsoft Visio Toolbox



[www.codimatech.com](http://www.codimatech.com)

### North America

Philadelphia  
ussales@codimatech.com

### Asia

Tokyo  
asiasales@codimatech.com

### Australia

Sydney  
australiasales@codimatech.com

### EMEA

London  
Johannesburg  
Munich  
Stockholm  
emeasales@codimatech.com

