

**Codima Toolbox**

autoVoIP™	autoVoIP™ Traffic Simulator	autoMonitor™	autoMap™
autoVoIP™ Consultancy Kit	autoAnalyzer™ Consultancy Kit		autoAsset™
Frame Flow Analyzer	RTP Analyzer	Report Browser	Remote Management
		Path Analyzer	Call Playback

## Dynamic Inventory For All IT Networks – Empower Your IT Asset Baselining

autoAsset™ is part of Codima Toolbox, the fully automated and fully integrated solution for managing IT networks. The dynamic inventory tool automatically discovers and identifies IT assets installed in any IT network. The automated network discovery helps a network manager to identify an organization's valuable IT assets with speed and ease.

Utilizing an up to date and precise IT asset inventory empowers organizations to eliminate time-consuming tasks and have a clear understanding of what IT assets are installed on their networks. An automated network inventory saves time, helps control costs, reduces security risks and maintains a reliable IT asset baseline.

The automated inventory tool offers a complete and accurate infrastructure baseline without substantial investment in software, training and professional services.

autoAsset™ automatically discovers software and devices installed on any IT network and produces valuable asset inventory reports in HTML. Utilizing agent-less technology, the discovery process makes use of existing agents on the network to gather information for the Asset inventory and the HTML Reports.

Today when maintenance fees represent around 10% of the purchase price for infrastructure networks, the asset reports provide valuable information to help reduce maintenance costs.

Organizations can quickly establish if they have exceeded software license limits by viewing the comprehensive Installed Software Report.

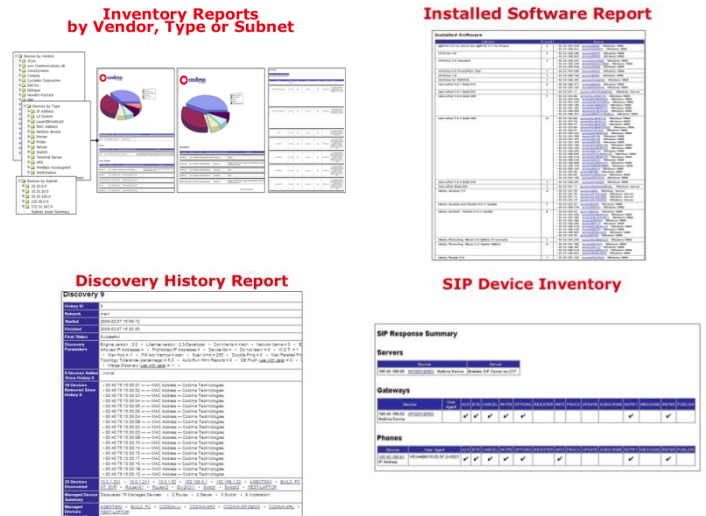
Auditors and administrators facing today's increasing legal requirements and need for network compliance can rely on autoAsset™ as the asset reports are easy to access and understand.

VoIP pre-deployment is an area where IT asset inventory is essential. autoAsset™ enables a network manager to decide if the network has the routers and switches needed to support VoIP from a QoS engineering and a capacity point of view. autoAsset™ provides reports which not only describe the routers and switches but also identify the switches with free ports.

An accurate discovery really helps when making network design decisions and when evaluating the impact of converged applications.

The asset reports also help organizations to rationalize equipment.

When troubleshooting, the asset reports provide valuable information on the physical and logical relationships between slots, ports, fans, power supplies etc in the Switch/Router chassis. Key information is available on network devices, including serial numbers, which are often needed to obtain technical support from suppliers and as a means of referencing maintenance documents.



### Automated Network Inventory

- ▶ Rapidly identify software and devices installed on any IT network
- ▶ Obtain a highly accurate automated IT network inventory
- ▶ Get inventory reports by vendor, type or subnet
- ▶ Identify switch port usage
- ▶ Identify software users
- ▶ Identify devices that have left or joined the network since last discovery
- ▶ Discover SIP Phones, servers and gateways
- ▶ Track commercial installed software versions and license requirements

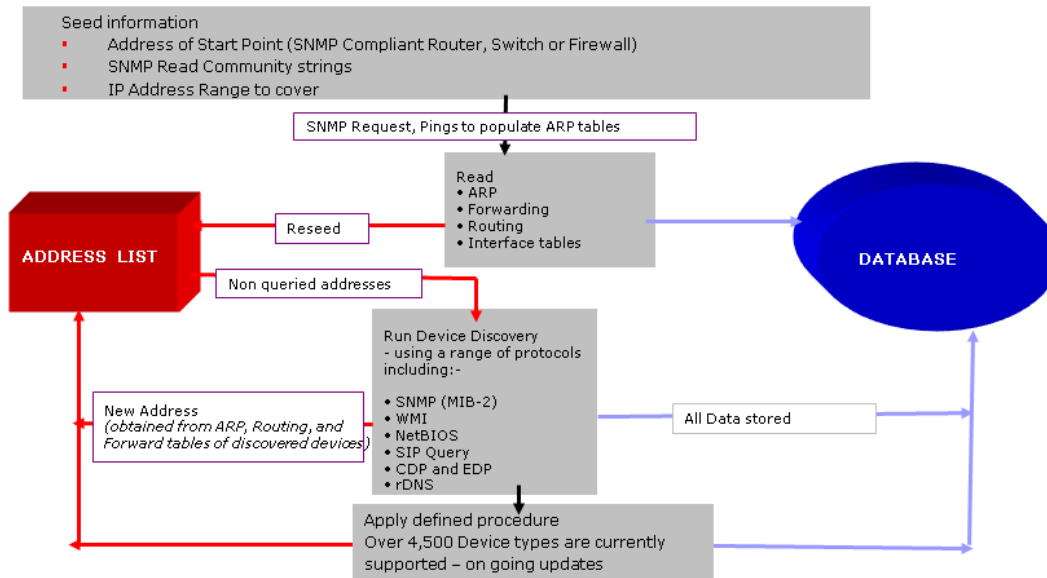
### What Your Business Stands To Gain

- ▶ Automation of time consuming manual tasks
- ▶ IT consolidation and compliance assurance
- ▶ Reduction of maintenance costs
- ▶ Reduction of security risk
- ▶ Assistance in network support and design
- ▶ Equipment rationalization
- ▶ Ability to police software installations

### Expand Functionality

- ▶ autoAsset™ can be deployed as a standalone or integrated with other tools from Codima Toolbox
- ▶ Add Network Mapping in Microsoft® Office Visio®
- ▶ Add VoIP Monitoring and Troubleshooting
- ▶ Add An Engineer's Portable VoIP Toolkit
- ▶ Add An IT Professional's Network Toolkit

## Discovery Process



## Key Features

- Discovers and reports on devices and software in any infrastructure
- Provides detailed IT asset information
- Establishes if software license limits are exceeded using the Installed Software Report
- Manages security risks and tracks changes by identifying all the devices that were removed or added since the last discovery run
- Makes reports available to a wider audience by saving as HTML - ensuring that individual cost centers can review their assets
- Verifies hardware or software upgrades for compliance control and security purposes
- Matches software installed to discovered devices - identifies software that is not allowed on the network for example non business applications
- Finds "lost" physical and logical assets
- Consolidates switch capacity by checking how many ports are in use
- Shows information on the physical and logical relationships between slots, ports, fans, power supplies etc in the Switch/Router chassis
- Provides inventory for SIP Phones, Servers and Gateways

## Key Benefits

- Facilitates network auditing and network compliance, improves network planning and efficiency - no need to work with out of date, incomplete, manually obtained information - uses current information obtained directly from network devices
- Ensures accurate IT budgeting - uses real data for budgeting/charging and ordering
- Reduces operating costs - automates the manual tasks of compiling and keeping registers of IT assets up to date
- Helps control maintenance fees - provides an up to date and precise inventory

## Key Functions

- Supports over 4,500 device types, over 8,000 NIC vendors and over 30,000 vendor codes - the list is constantly updated

## Codima Discovery Engine™

- Codima Discovery Engine™ uses the following protocols in the discovery process:
  - SNMP, SIP, NetBIOS, ICMP and rDNS, as well as proprietary vendor protocols such as WMI, CDP or EDP. Use of common and universal protocols makes the discovery agent-less.
- Supports multiple SNMP read communities across the network
- Supports Japanese Character Encoding
- Provides user control of discovery parameters:
  - Allowed and prohibited IP address range can be configured
  - Bandwidth limits can be set from 64Kbs to 640Kbs
- Provides for discovery across firewalls

## Requirements

- Windows Vista, XP or Server 2003 with 2GHz CPU (minimum)
- 516Mb RAM (minimum)

## About Codima Toolbox

Codima Toolbox is a versatile, scalable and integrated solution that helps system integrators, service providers and large organizations as well as small and medium sized companies to manage their networks successfully. Built from the ground up the easy-to-use, cost efficient, and highly visual tools deliver a unique beginning-to-end solution for VoIP pre-assessment through post-deployment through post-deployment in addition to automated network monitoring and network discovery with visualization directly in Visio®.

### Key Features include:

- Traffic Simulation and Stress Testing
- Real Time Monitoring
- Automatic Correlation Engine
- Troubleshooting Grid Overview
- In-depth Reports
- Network Monitoring - One Stop Solution
- Automatic Network Inventory and Mapping directly in Visio®

## About Codima

Codima's team has a long track record of bringing highly advanced network technology to the market. Today we are recognized for tools that help organizations to reduce costs, save time and successfully manage their infrastructure networks from beginning to end. Codima is a Microsoft® Certified Partner. autoMonitor™ and autoMap™ are key solution providers to Microsoft® Visio® Toolbox. Codima is an Avaya DevConnect Gold Partner and autoVoIP™, autoMap™ and autoAsset™ are tested and accepted as Avaya Compliant. Codima Toolbox resells through our partners globally.



Microsoft Visio Toolbox



[www.codimatech.com](http://www.codimatech.com)

### North America

Philadelphia  
ussales@codimatech.com

### Asia

Tokyo  
asiasales@codimatech.com

### Australia

Sydney  
australiasales@codimatech.com

### EMEA

London  
Johannesburg  
Munich  
Stockholm  
emeasales@codimatech.com



Copyright ©2003-2009 Codima Inc.  
All Rights Reserved.